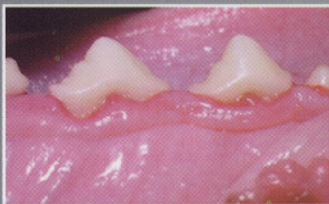


Periodontal Disease: What Is It?

Periodontal disease, which includes gingivitis and periodontitis, is an inflammation and/or infection of the gums and bone around your dog's teeth. It's caused by bacteria that accumulate in the mouth, forming soft plaque that later hardens into tartar. If untreated, periodontal disease can eventually lead to tooth loss.



**Stage 1
Gingivitis**
Gum tissue around the teeth can become inflamed and swollen. Plaque and tartar are usually present on the teeth.



**Stage 2
Mild Periodontitis**
Inflammation progresses to an infection that starts to destroy gum and bone tissue around the teeth. This can lead to discomfort for the dog, and bad breath may be noticeable.



**Stage 3
Moderate Periodontitis**
The continuing infection destroys more tissue around the teeth, often causing bleeding of gums and loosening of teeth. The discomfort and pain can affect eating habits and behavior.



**Stage 4
Severe Periodontitis**
Extensive infection is tearing down even more of the attachment tissues (gum and bone). Teeth are at risk of being lost.

Periodontal disease is the most common disease among dogs. It affects more than 8 out of 10 dogs over 3 years of age.¹

Notice: This product license is conditional. As with all USDA conditionally licensed products, data submitted to the USDA supports a reasonable expectation of efficacy. Safety was established in trials involving more than 600 dogs. Additional efficacy and potency studies are in progress. Consultation with a veterinarian is recommended.

Reference:

1. American Animal Hospital Association. *The Path to High-Quality Care: Practical Tips for Improving Compliance*. Lakewood, Colo: AAHA Press, 2003;46.

For product support, call 1-800-366-5288.



Pfizer Animal Health

© 2005 Pfizer Inc. All rights reserved.
SAB0905062

Recognize Any of These Mouths?

Flip your dog's
lip to find out.



Pfizer Animal Health

How Do I Know If My Dog Has Periodontal Disease?

If you notice that your dog has any of these symptoms, be sure to tell your veterinarian:

- Bad breath (one of the first signs of periodontal disease)
- Red or swollen gums
- A yellow-brown crust near the gum line
- Loose or missing teeth
- Discomfort when mouth or gums are touched
- Possible decreased appetite or weight loss due to difficulty chewing

Is There Anything I Can Do?

Brush. Preventing periodontal disease begins at home. By brushing your dog's teeth on a regular basis, you will help to reduce plaque buildup. Be sure to use a toothbrush and toothpaste specially designed for dogs.

Clean. You visit your dentist regularly for cleaning and dental exams; you should take your dog to your veterinarian for the same type of care. Regular professional cleaning under general anesthesia, including areas under the gum line will help remove plaque and tartar on teeth. This can help reduce the bacteria's contribution to periodontitis.

Giving your dog appropriate chew toys and feeding him specially formulated dog food for dental disease will help remove plaque between cleanings.

Now There's a New Vaccine to Help Fight the Destruction Caused by Canine Periodontitis

The Porphyromonas vaccine aids in the prevention of canine periodontitis as demonstrated by a reduction in bone changes. Periodontitis, the most common bacterial infection in dogs, can lead to long-term effects such as tooth loss if left untreated. When used as part of a complete dental care program, you can be confident knowing you are providing the best care for your dog.

Introducing the **Porphyromonas** Bacterin Denticanis-Gulae-Salivosa



Common Questions About the Porphyromonas Vaccine

- **How often will my dog be vaccinated?**
Your dog will initially receive two doses of the Porphyromonas vaccine, given three weeks apart. Your veterinarian is the best person to advise you on the number and frequency of future vaccinations your dog may need.
- **When is it safe to vaccinate my dog?**
Safety was demonstrated in dogs 7 weeks of age and older.
- **What if my dog already has periodontal disease?**
Periodontal disease can progress to four different stages. There can even be different stages of involvement in different teeth within the same dog's mouth. Appropriate periodontal therapy should be administered to restore health to the teeth; however, all teeth can potentially benefit from the Porphyromonas vaccine.
- **If my dog receives the vaccine, are cleaning and brushing still necessary?**
The Porphyromonas vaccine should be used as part of a total dental care package that includes at-home care and professional cleanings. Even with the use of the Porphyromonas vaccine, tartar and plaque may still develop.
- **What else should I do to keep my dog's mouth healthy?**
Your veterinarian will recommend the most appropriate treatment for your dog.
- **What are the possible side effects of the Porphyromonas vaccine?**
As with any vaccine, the potential for side effects after vaccination exists. If you notice anything unusual, contact your veterinarian.